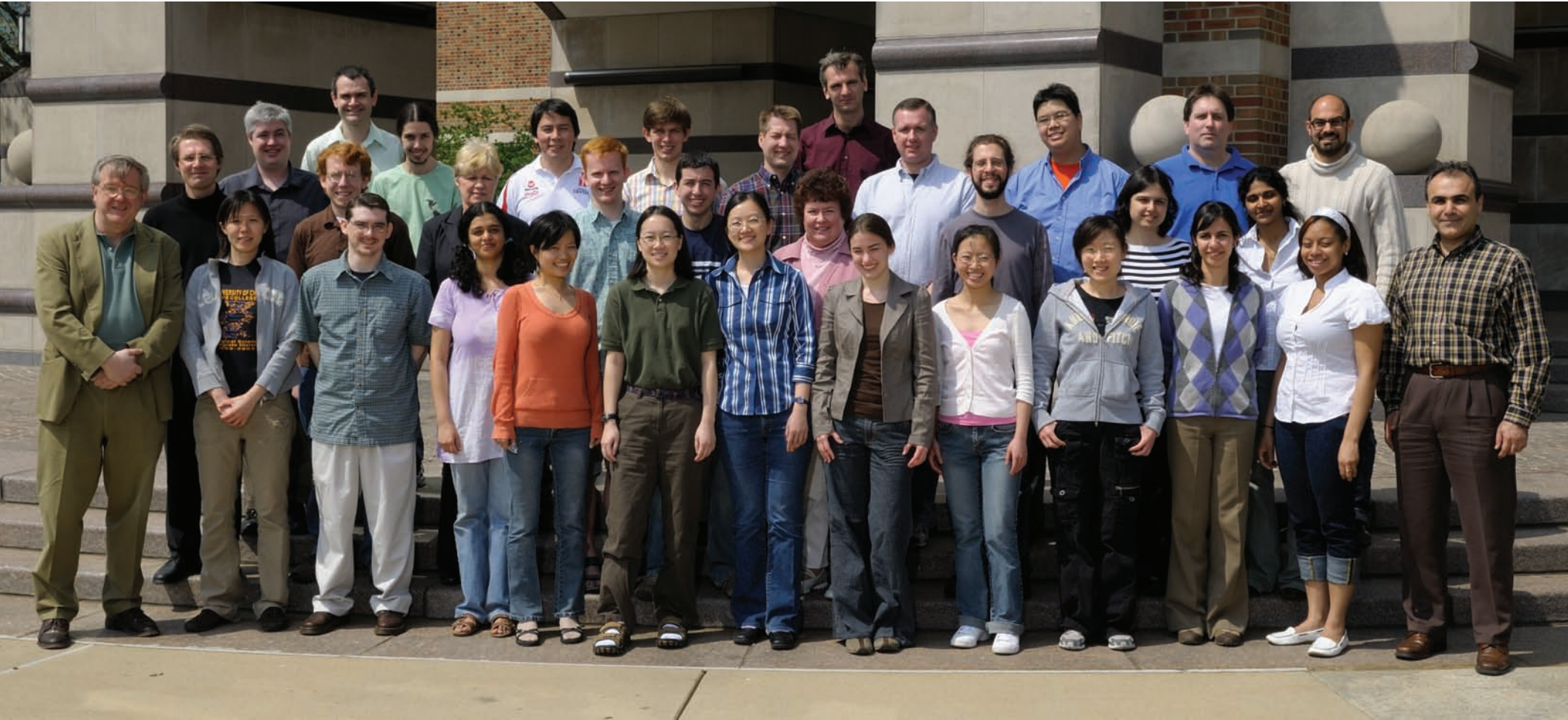
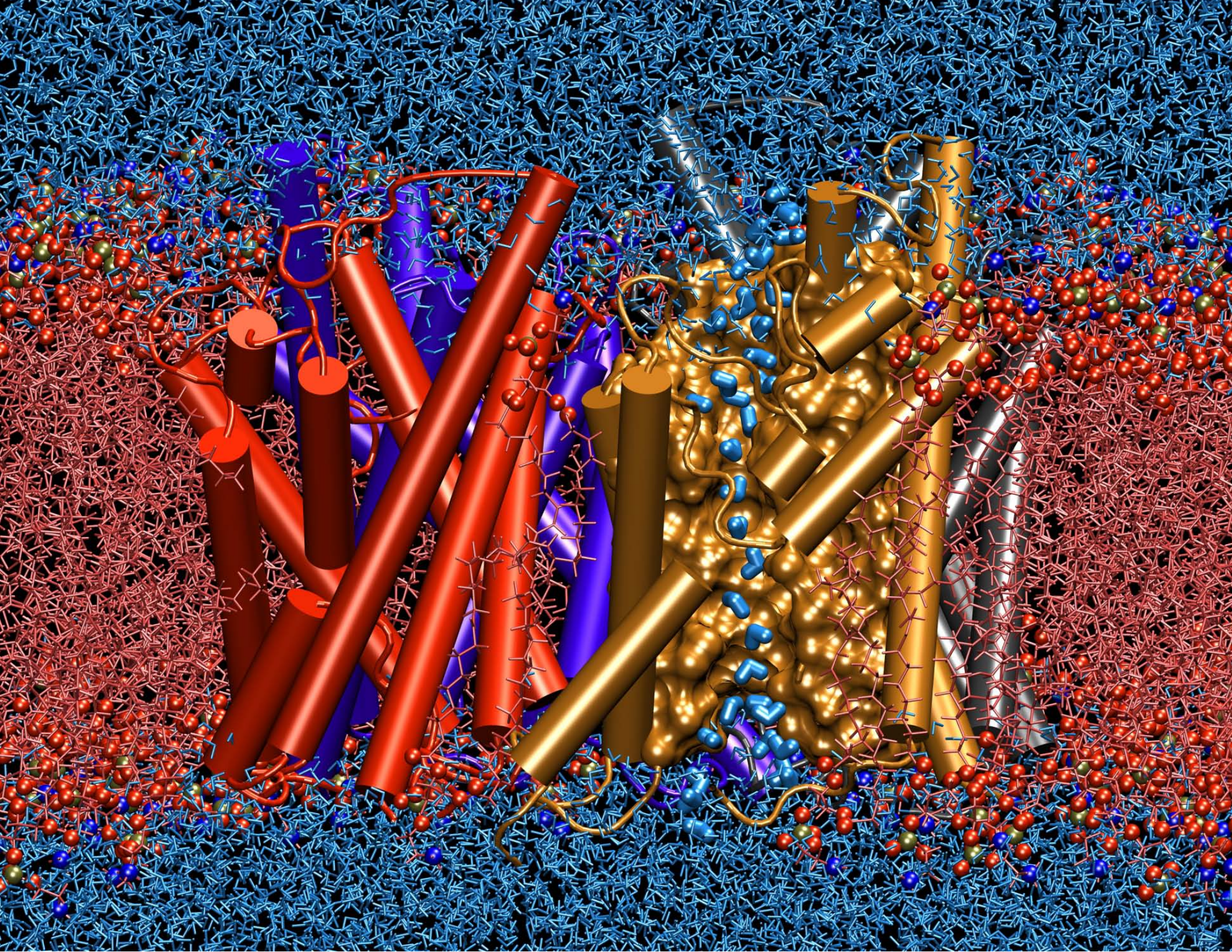


Theoretical and Computational Biophysics Group

NIH Resource for Macromolecular Modeling and Bioinformatics
Beckman Institute for Advanced Science and Technology
University of Illinois at Urbana-Champaign
www.ks.uiuc.edu

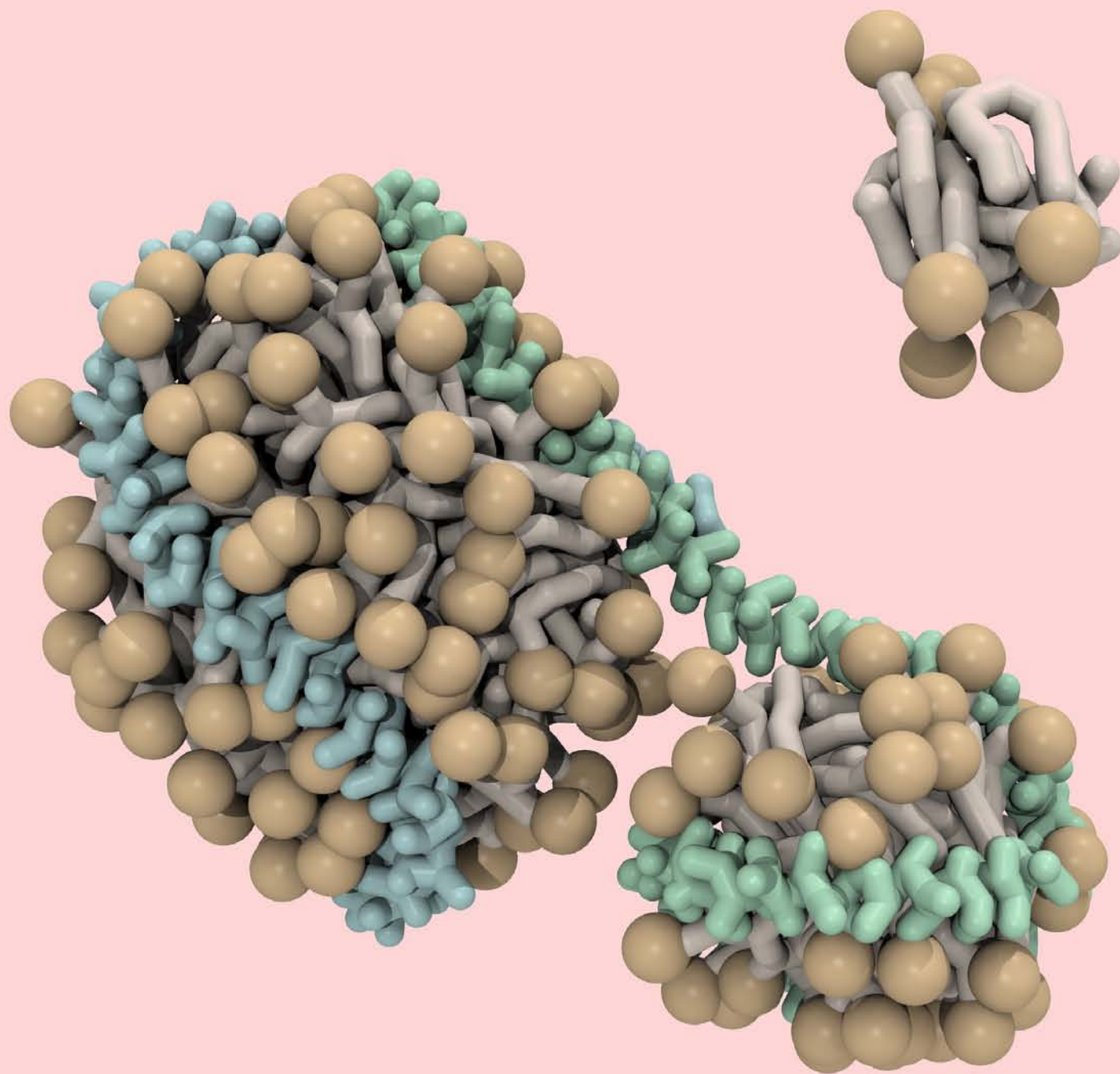


2009 Calendar



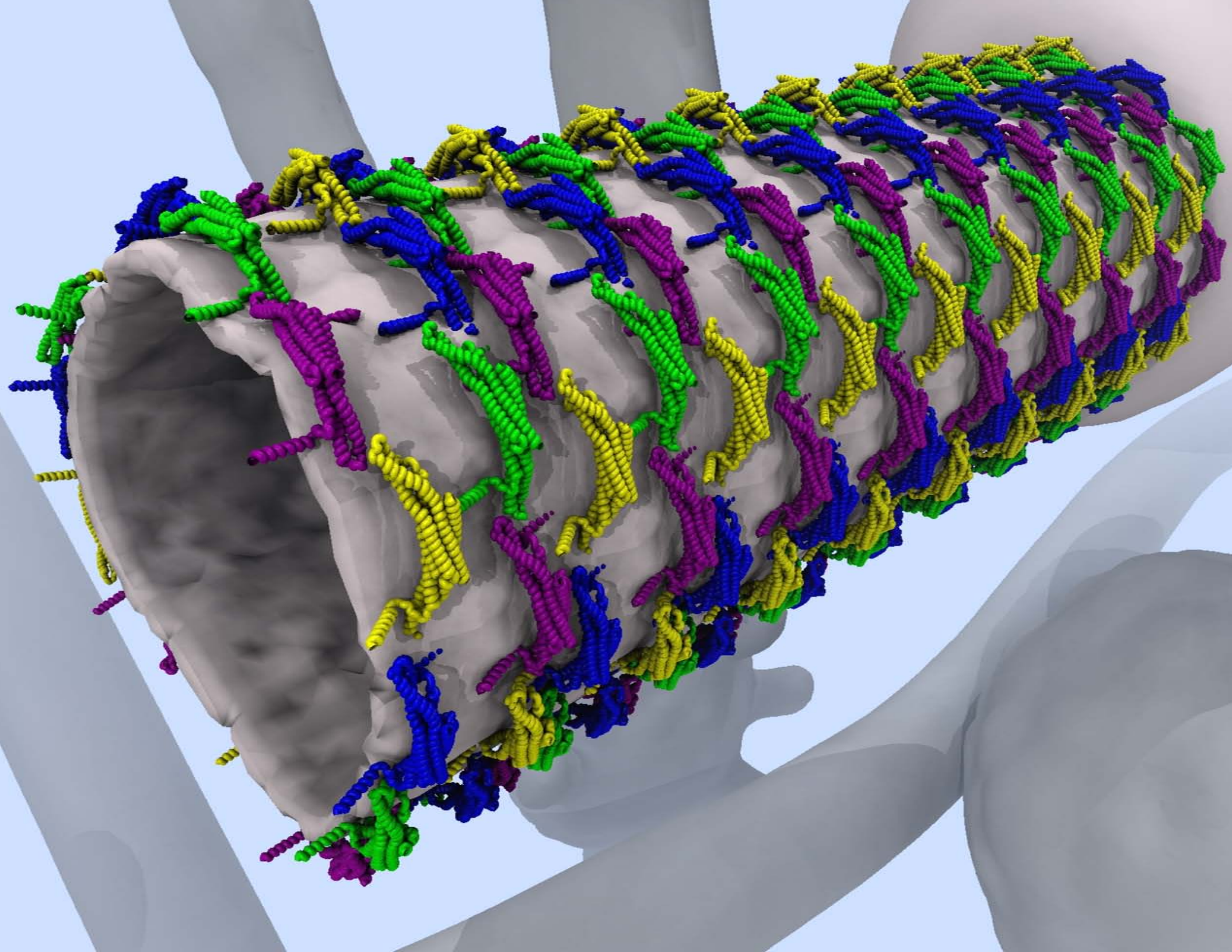
January 2009

Sunday	Monday	Tuesday	Wednesday	Thursday	Friday	Saturday
				1 New Year's Day	2	3
4	5	6	7	8	9	10
11	12	13	14	15	16	17
18	19 Martin Luther King Jr. Day	20	21	22	23	24
25	26	27	28	29	30	31



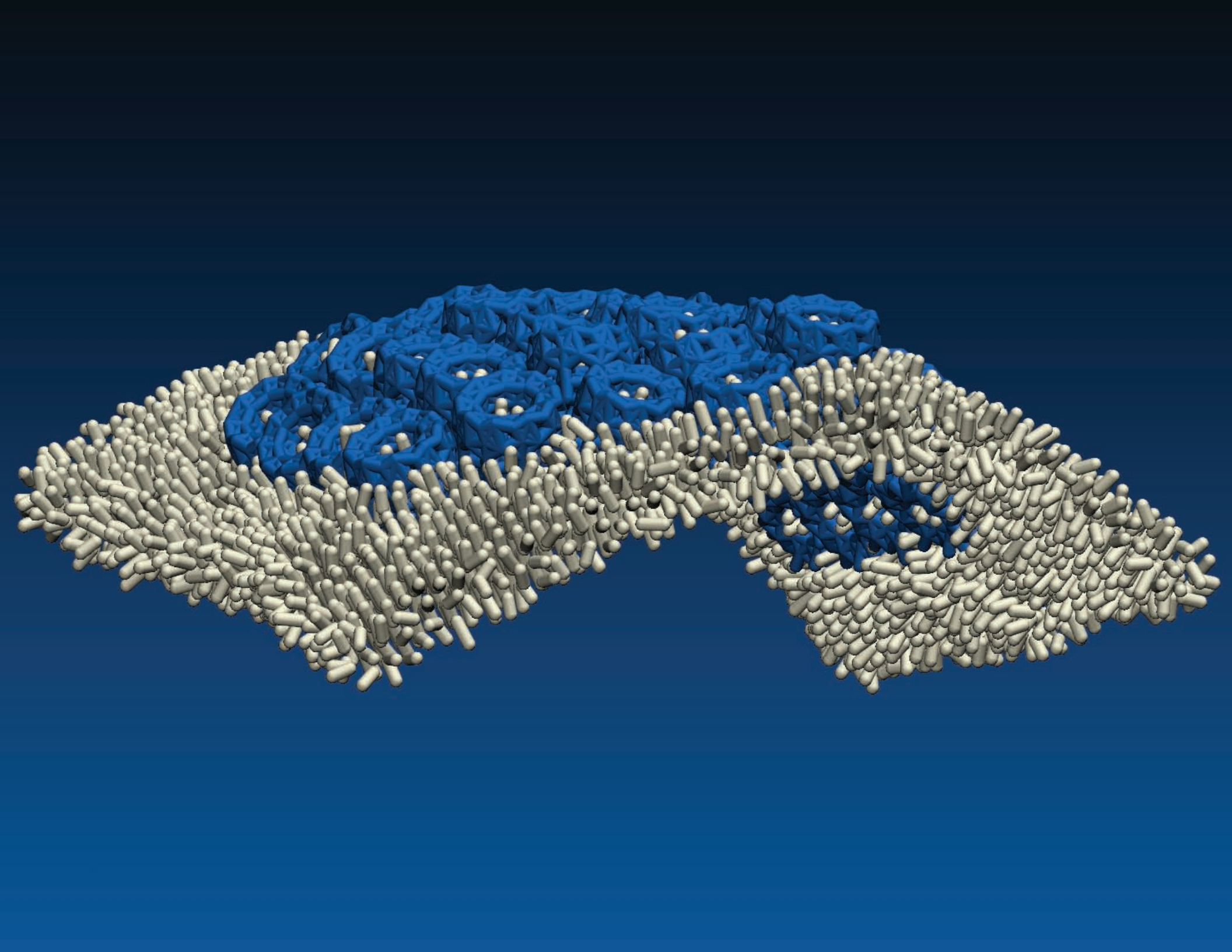
February 2009

Sunday	Monday	Tuesday	Wednesday	Thursday	Friday	Saturday
1	2 Groundhog's Day	3	4	5	6	7
8	9	10	11	12	13	14 Valentine's Day
15	16 President's Day	17	18	19	20	21
22	23	24	25	26	27	28



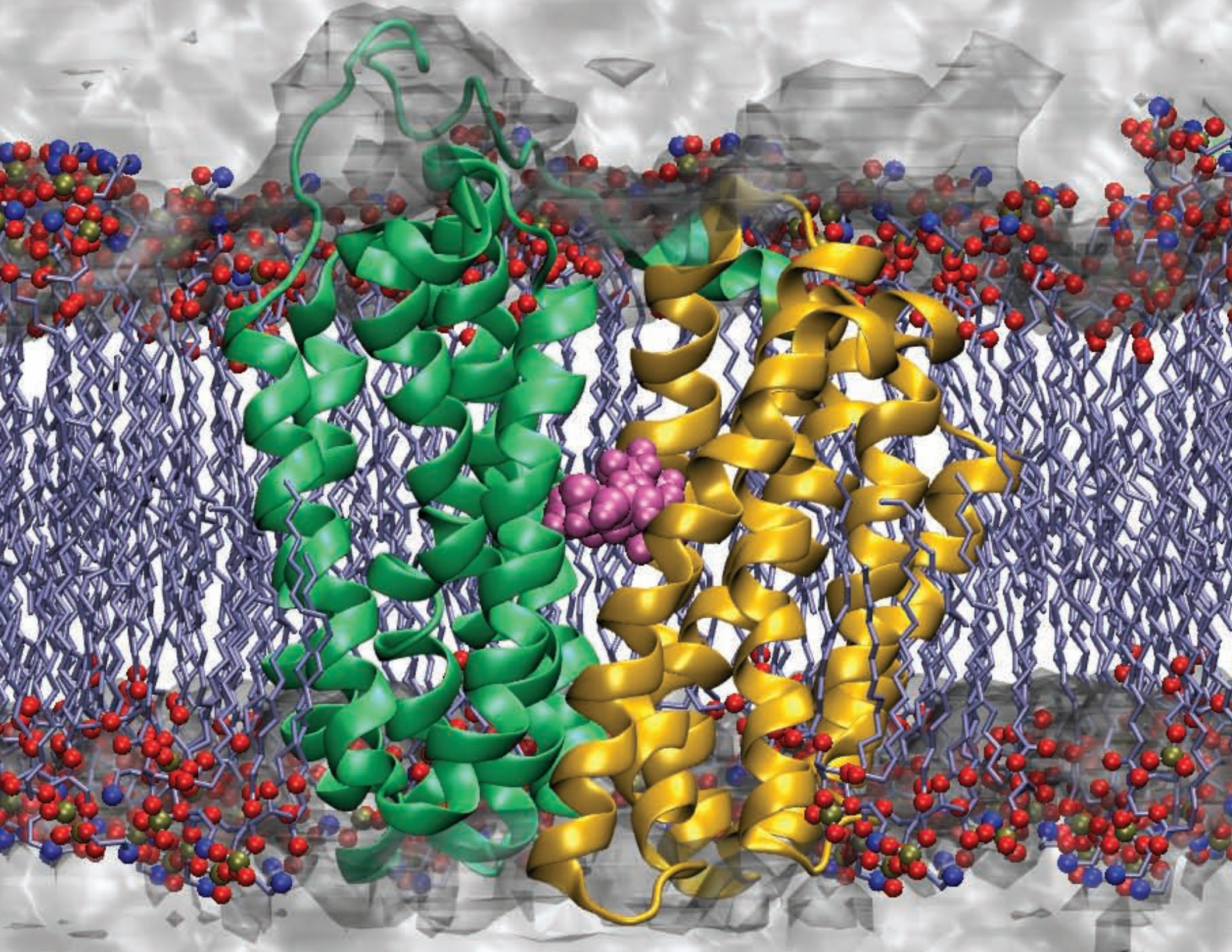
March 2009

Sunday	Monday	Tuesday	Wednesday	Thursday	Friday	Saturday
1	2	3	4	5	6	7
8	9	10	11	12	13	14
15	16	17 St. Patrick's Day	18	19	20	21
22	23	24	25	26	27	28
29	30	31				



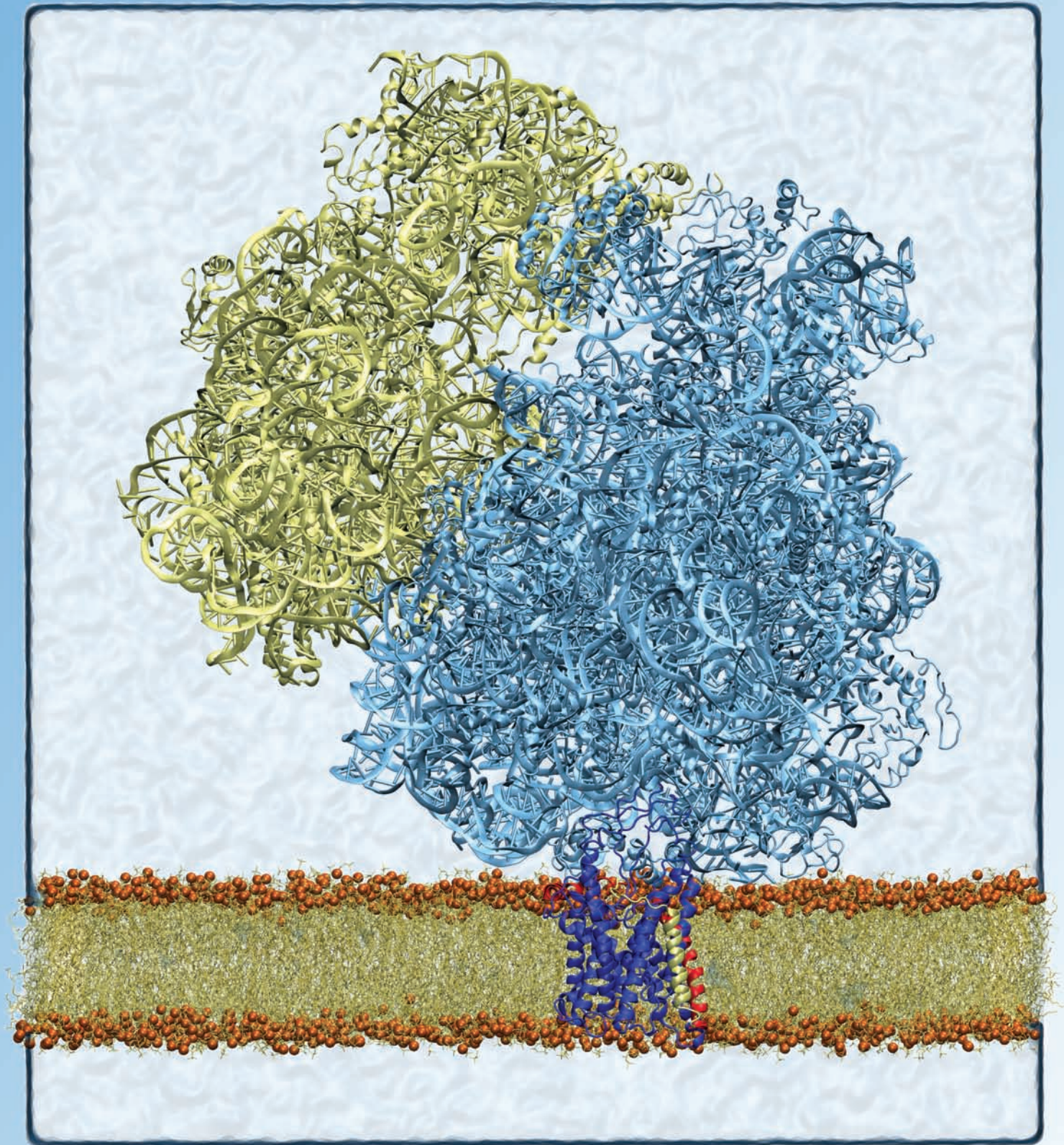
April 2009

Sunday	Monday	Tuesday	Wednesday	Thursday	Friday	Saturday
			1 April Fool's Day	2	3	4
5	6	7	8	9	10	11
12 Easter Sunday	13	14	15	16	17	18
19	20	21	22	23	24	25
26	27	28	29	30	31	



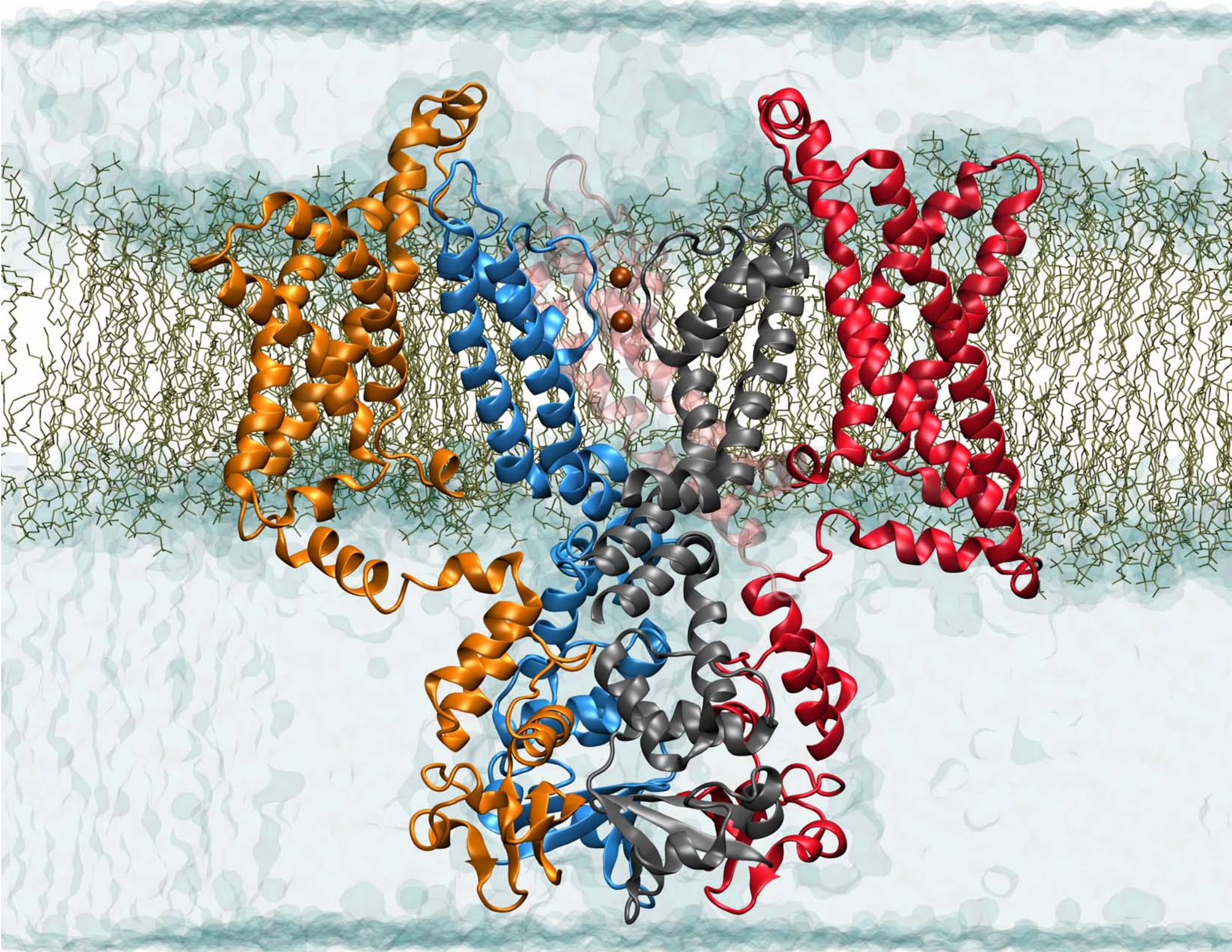
May 2009

Sunday	Monday	Tuesday	Wednesday	Thursday	Friday	Saturday
					1	2
3	4	5 Cinco de Mayo	6	7	8	9
10 Mother's Day	11	12	13	14	15	16
17	18	19	20	21	22	23
24 / 31	25 Memorial Day	26	27	28	29	30



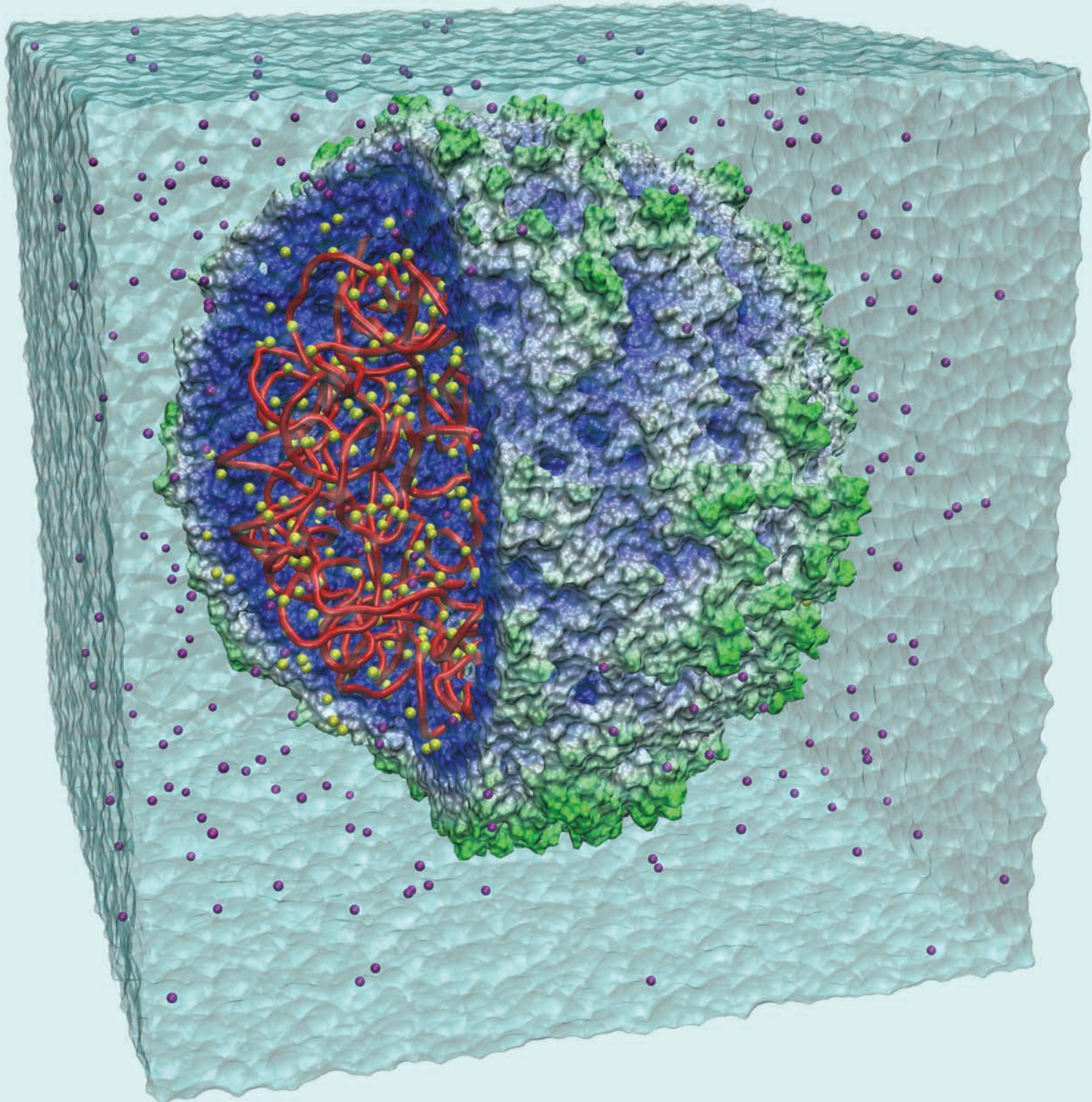
June 2009

Sunday	Monday	Tuesday	Wednesday	Thursday	Friday	Saturday
	1	2	3	4	5	6
7	8	9	10	11	12	13
14	15	16	17	18	19	20
21	22	23	24	25	26	27
Father's Day						
28	29	30				



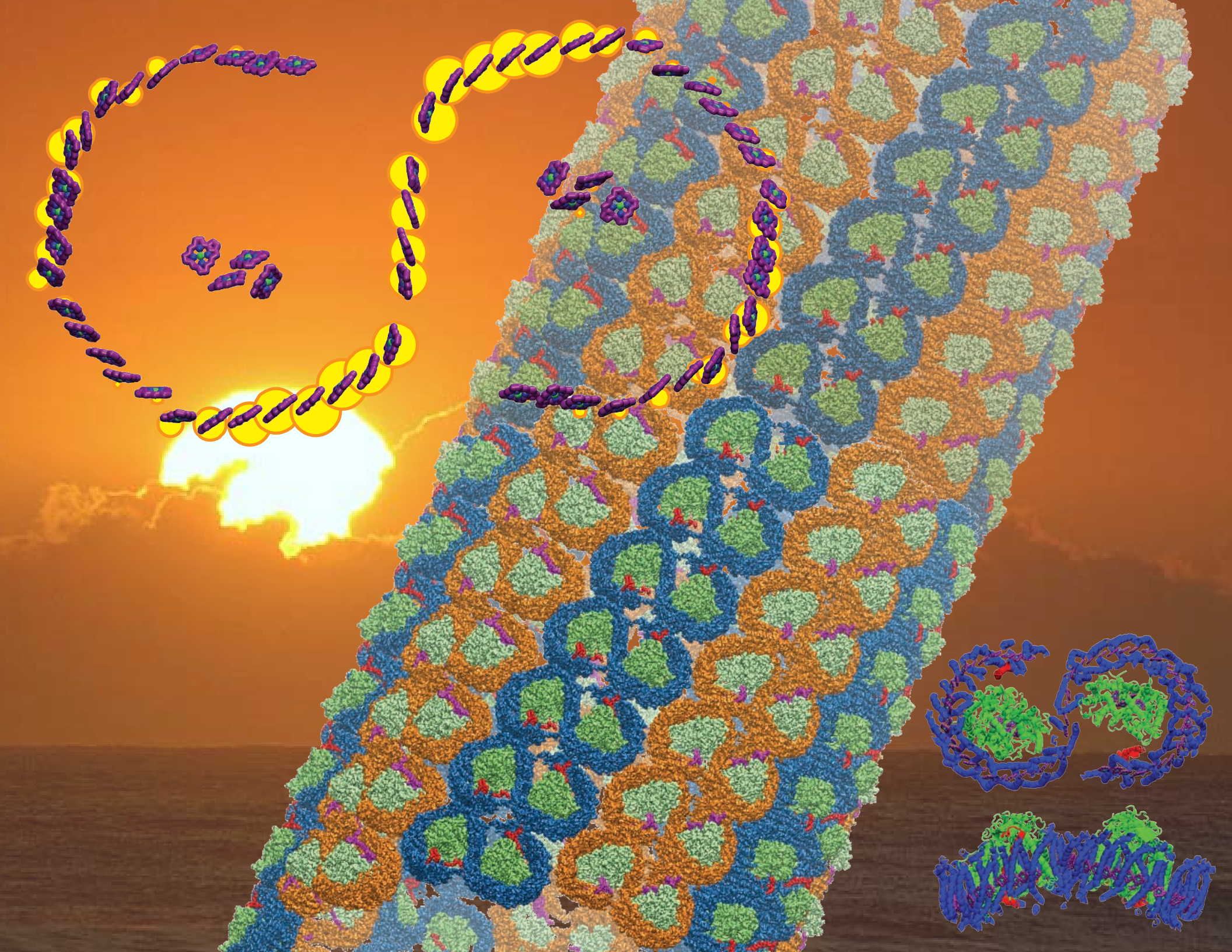
July 2009

Sunday	Monday	Tuesday	Wednesday	Thursday	Friday	Saturday
			1	2	3	4 Independence Day
5	6	7	8	9	10	11
12	13	14	15	16	17	18
19	20	21	22	23	24	25
26	27	28	29	30	31	



August 2009

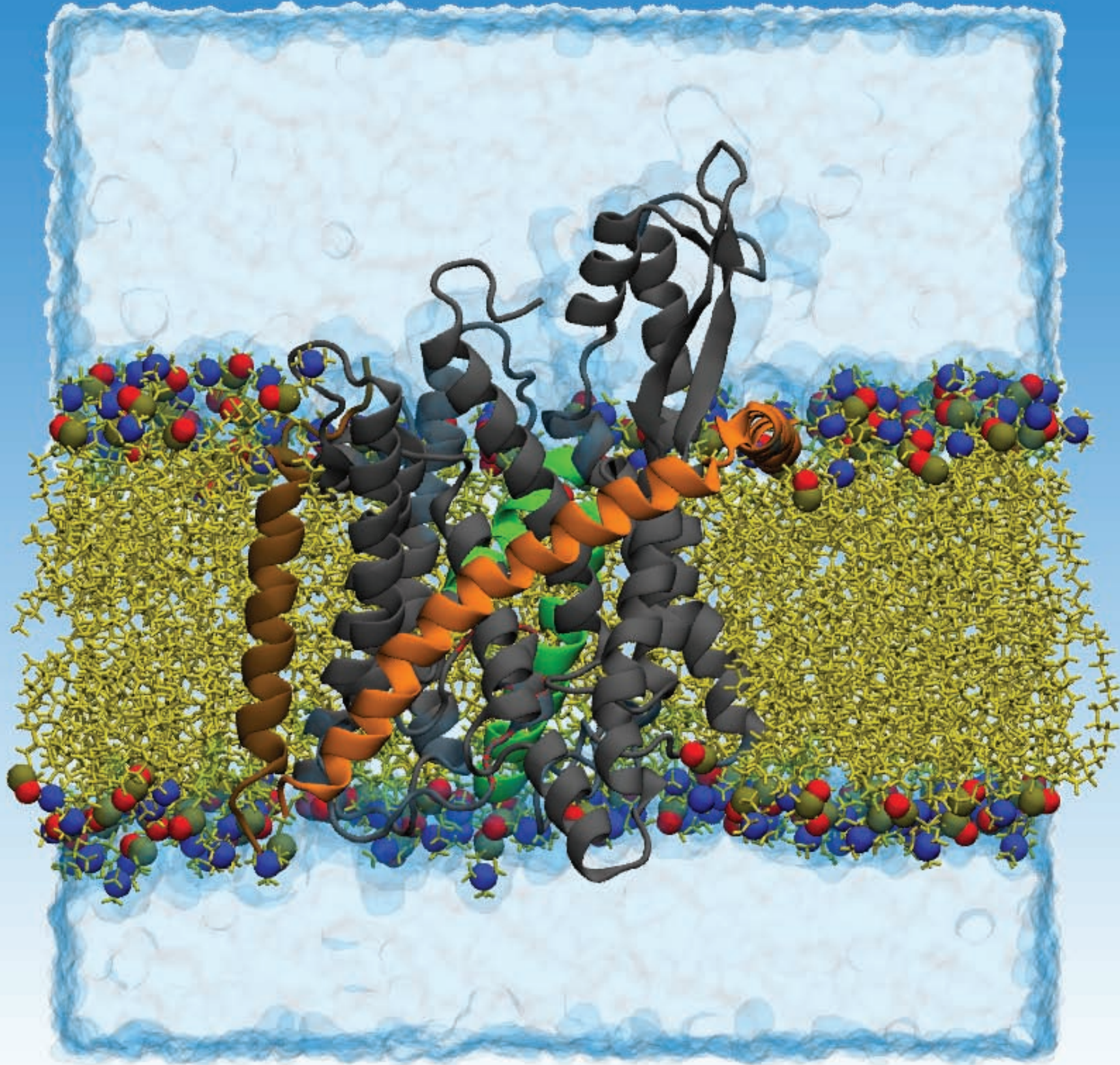
Sunday	Monday	Tuesday	Wednesday	Thursday	Friday	Saturday
						1
2	3	4	5	6	7	8
9	10	11	12	13	14	15
16	17	18	19	20	21	22
23 / 30	24 / 31	25	26	27	28	29



September 2009

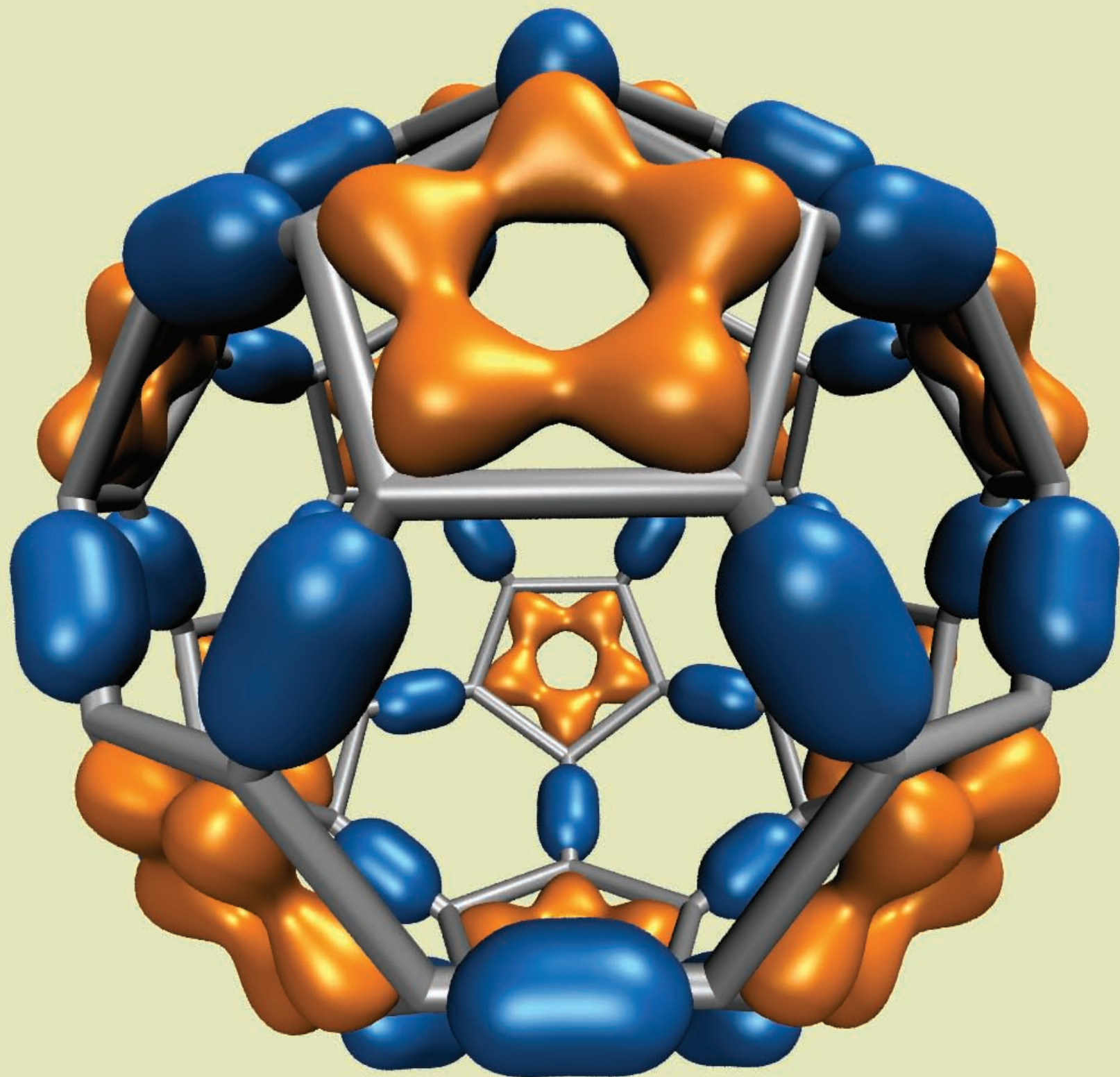
Tube of Light Harvesting Protein
Jen Hsin and Melih Sener
Background photo courtesy of Sias van Schalkwyk

Sunday	Monday	Tuesday	Wednesday	Thursday	Friday	Saturday
		1	2	3	4	5
6	7 <small>Labor Day</small>	8	9	10	11	12
13	14	15	16	17	18	19
20	21	22	23	24	25	26
27	28	29	30			



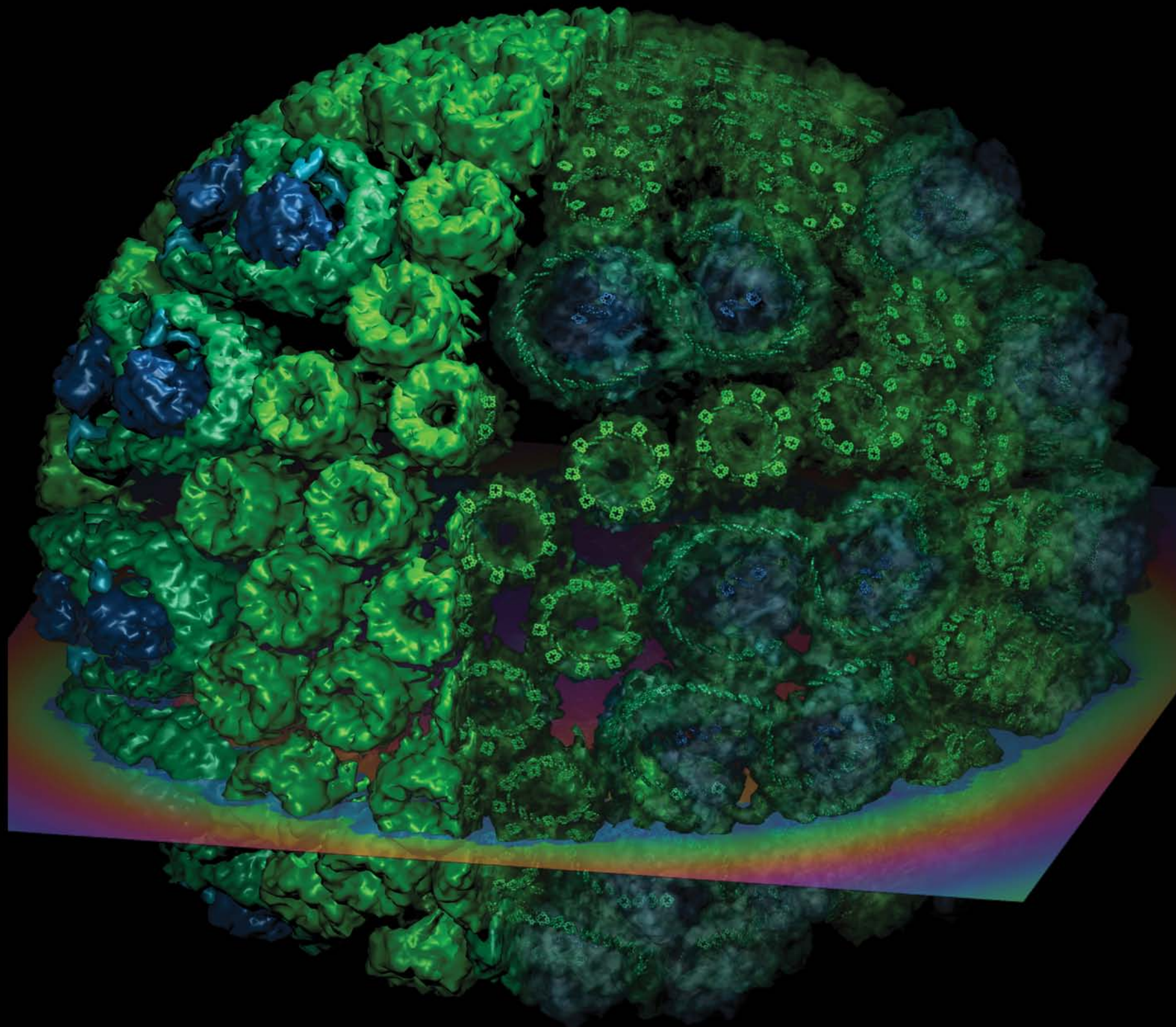
October 2009

Sunday	Monday	Tuesday	Wednesday	Thursday	Friday	Saturday
				1	2	3
4	5	6	7	8	9	10
11	12 <small>Columbus Day</small>	13	14	15	16	17
18	19	20	21	22	23	24
25	26	27	28	29	30	31 <small>Halloween</small>



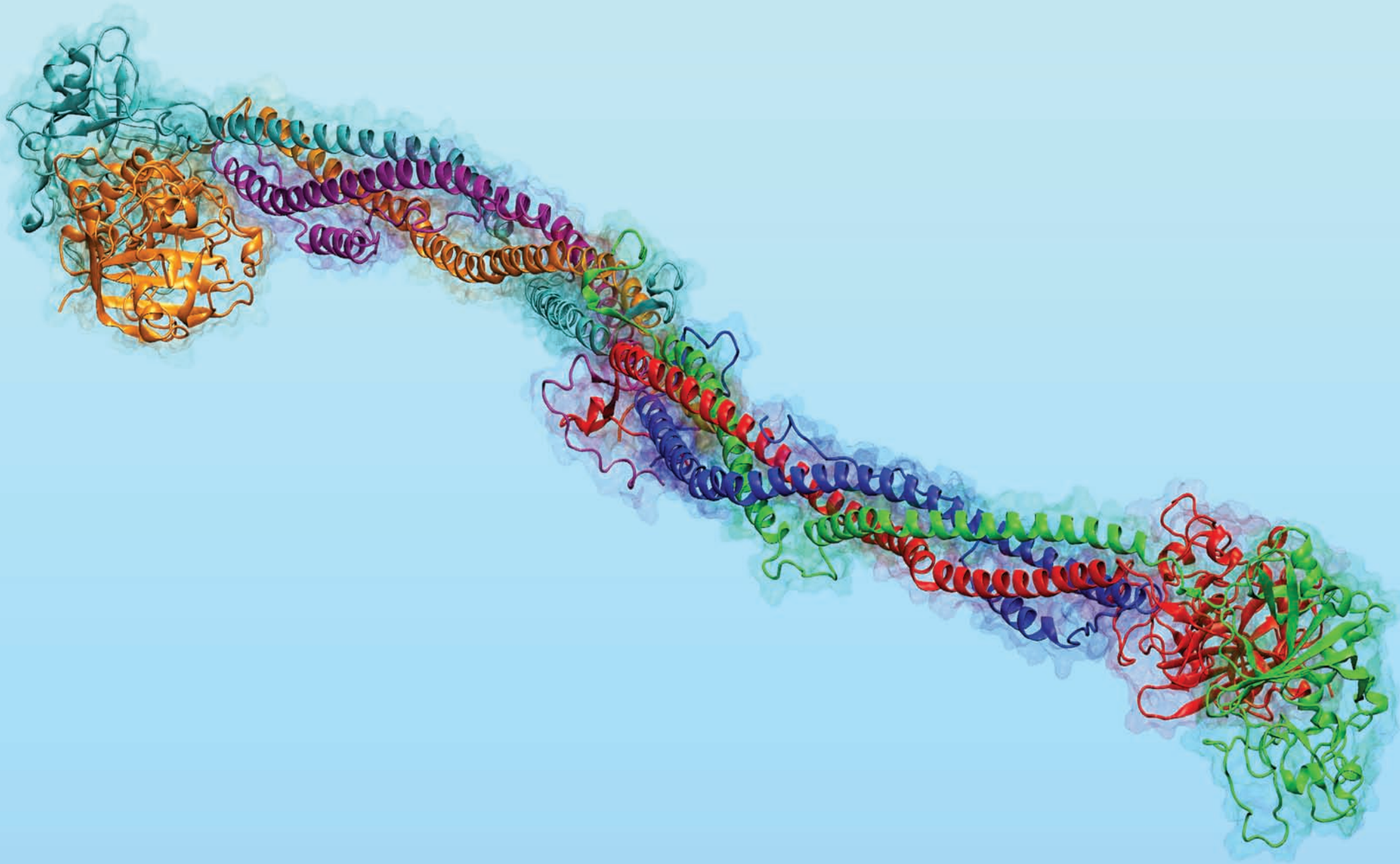
November 2009

Sunday	Monday	Tuesday	Wednesday	Thursday	Friday	Saturday
1	2	3	4	5	6	7
8	9	10	11 Veteran's Day	12	13	14
15	16	17	18	19	20	21
22	23	24	25	26 Thanksgiving Day	27	28
29	30					

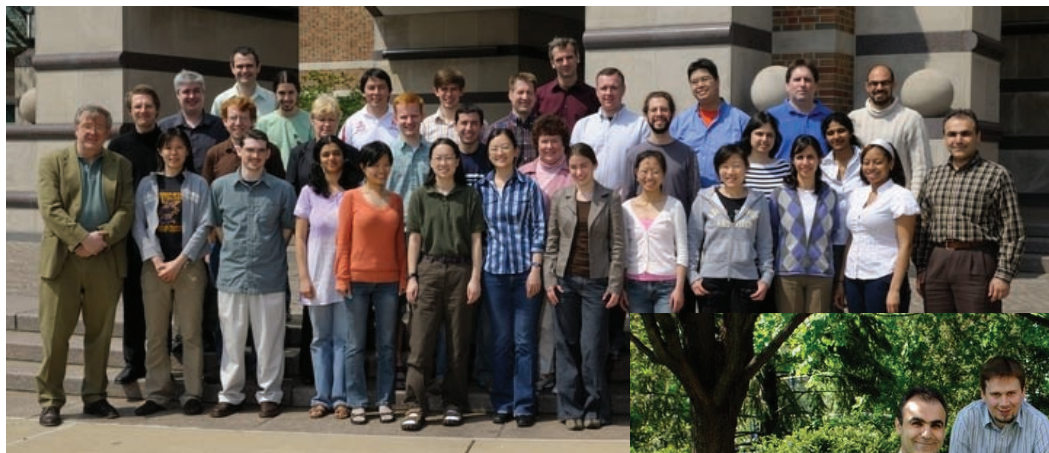


December 2009

Sunday	Monday	Tuesday	Wednesday	Thursday	Friday	Saturday
		1	2	3	4	5
6	7	8	9	10	11	12
13	14	15	16	17	18	19 <small>Hanukkah</small>
20	21	22	23	24	25 <small>Christmas Day</small>	26 <small>Kwanzaa</small>
27	28	29	30	31 <small>New Year's Eve</small>		



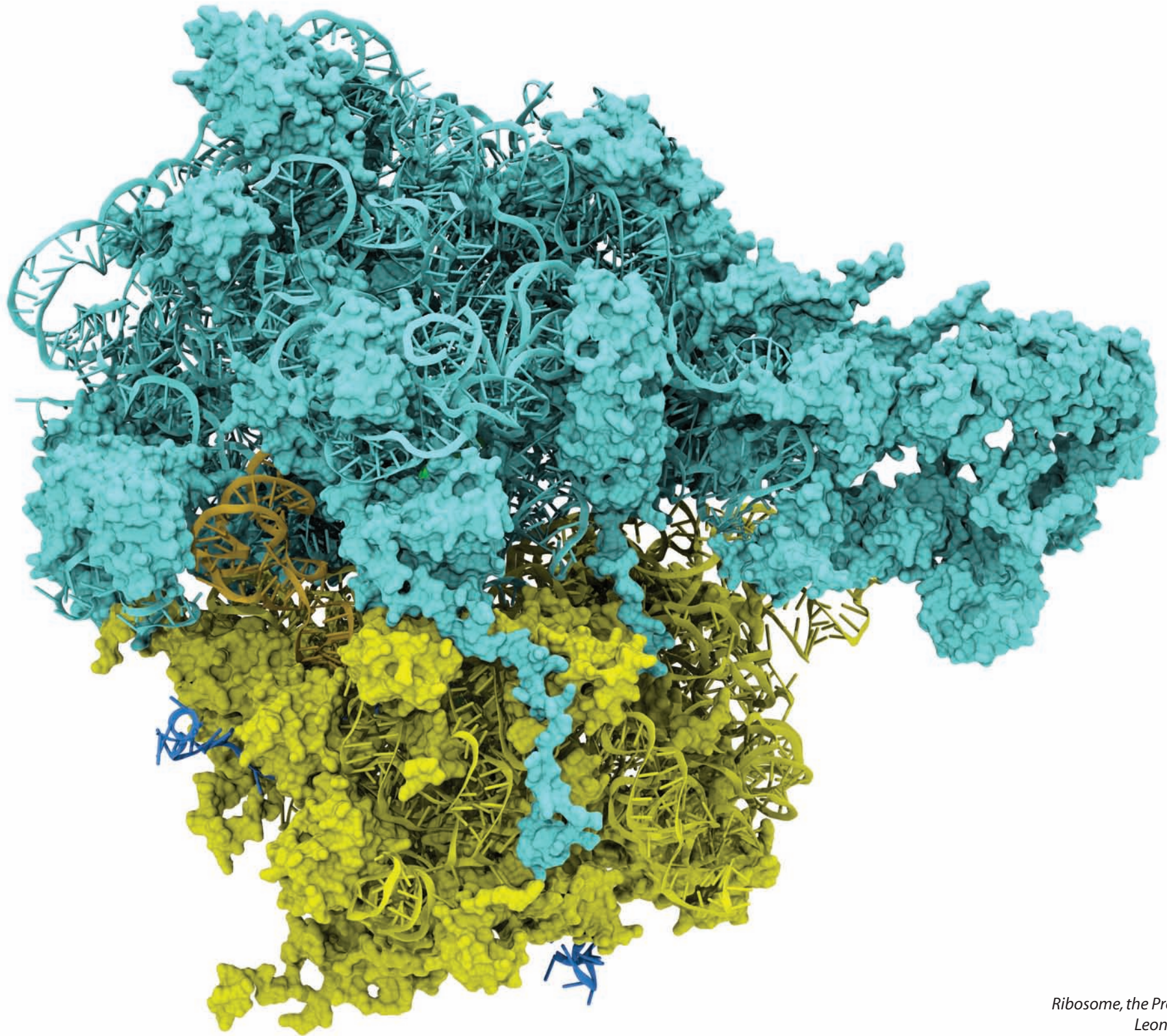
Fibrinogen, the Protein Building Block of a Blood Clot
Eric Lee



Klaus Schulten
Director, TCBG

The Theoretical and Computational Biophysics Group (TCBG), an NIH Resource for Macromolecular Modeling and Bioinformatics, was founded by Professor Klaus Schulten in 1989 and is located at the Beckman Institute of the University of Illinois at Urbana-Champaign (UIUC). The group is led by Professor Klaus Schulten (Physics) with Professors Alek Aksimentiev (Physics), Laxmikant Kale (Computer Science), Zaida Luthey-Schulten (Chemistry) and Emad Tajkhorshid (Biochemistry, Biophysics, and Pharmacology). Research and development activities of the TCBG focus on structure and function of supramolecular systems in the living cell, as well as on the development of new algorithms and efficient computing tools for physical biology.

Learn more at the TCBG website: www.ks.uiuc.edu.



Ribosome, the Protein Factory
Leonardo Trabuco